

## ACCESS

### General Principles

The access arrangements will remain the same as the existing building, which has good transport links and access (with large stair cores and lifts). The varied mix of proposed flats will be accessible to a wide demographic, including families and single people.

### Vertical Access

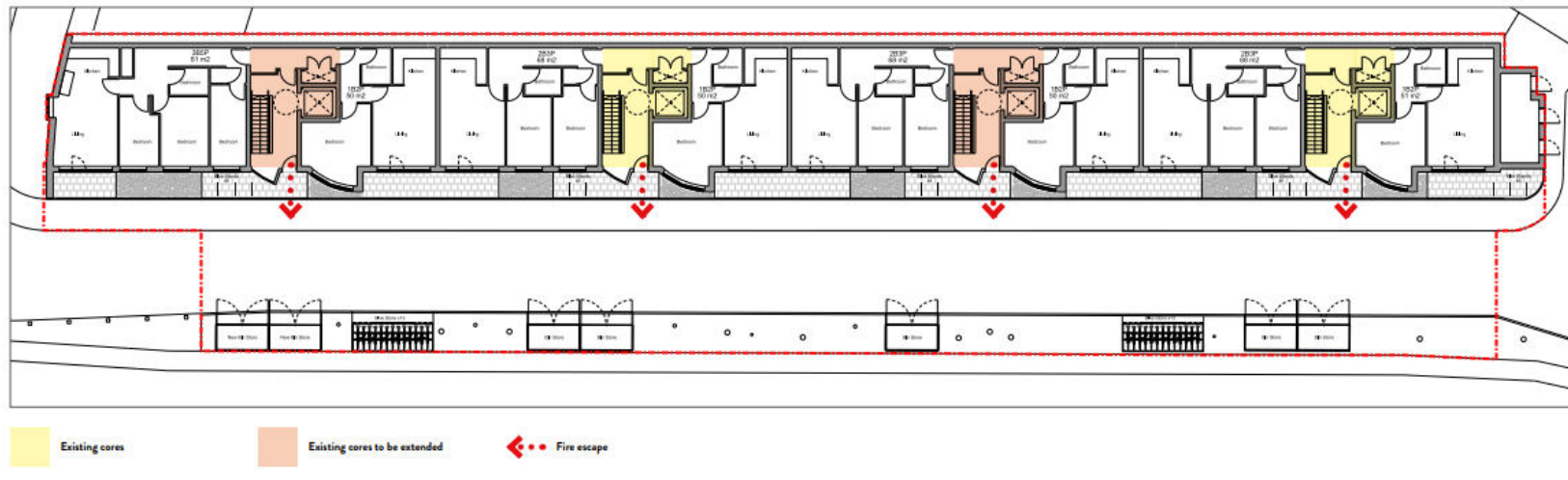
Two of the existing stairs and lifts will be extended two storeys to service the new floors. This makes the new flats very accessible, especially for those with reduced mobility.

### Part M

All units will meet M4(2) standards.  
One 2B3P unit will meet M4(3) - wheelchair adaptable.

### Fire

The existing building has a robust fire strategy in place. The two new floors will have mechanical smoke ventilation in the communal corridors and lobbies to actively extract smoke. The size of the windows and length of corridors is limited in accordance with the building regulations. The fire escape route is the same as the current building, down the protected stair cores and out onto the road in front.



This page is intentionally left blank